

Picture Quiz Item 3: Detail of Upper Siddington bridge over the Thames and Severn Canal

10 October 2020

To GSIA Members

The answer to the third picture was a close up view of the 'cramps' stamped with the initials 'TSC' set in the parapet of Upper Siddington bridge over the line of the Thames and Severn Canal at Siddington near Cirencester [to show on 1900 25 inch OS map [click here](#)].



2012

Cramps are the brackets used to secure the coping stones of the parapet. Holes drilled into the tops of adjacent coping stones are filled with molten lead and the cramp inserted before the lead solidifies and fixes the cramp firmly in place.

This was possibly the hardest of all six quiz pictures but a few of you have written in to say where it was (or at least what it was).

The cramps are obviously very old but I don't know if they are original or not. Upper Siddington is the only bridge where I am aware the TSC initials are visible but please tell us if you know of any others and they can be added to the GSIA records.

Shown below is the top of the parapet and the bridge in 2012 (which shows the repairs undertaken over the years), an undated picture of the bridge and the lock below in water and finally the lock awaiting restoration. This last picture shows what massive structures these locks are.

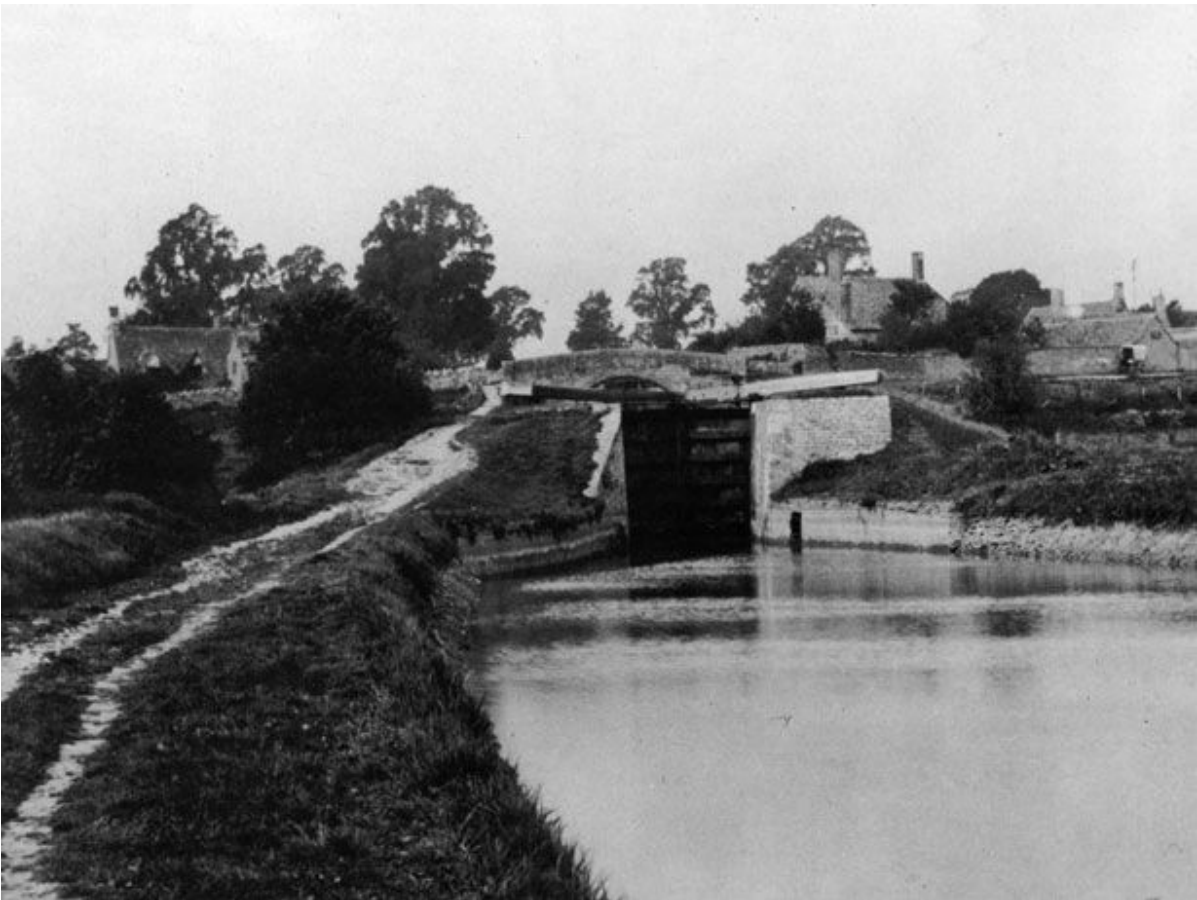
R Wilson



2012 Upper Siddington Bridge



2012 Upper Siddington Bridge



Upper Siddington Bridge and lock below it (date unknown)



2012 Upper Siddington Bridge and derelict lock below it